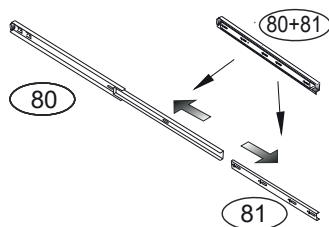
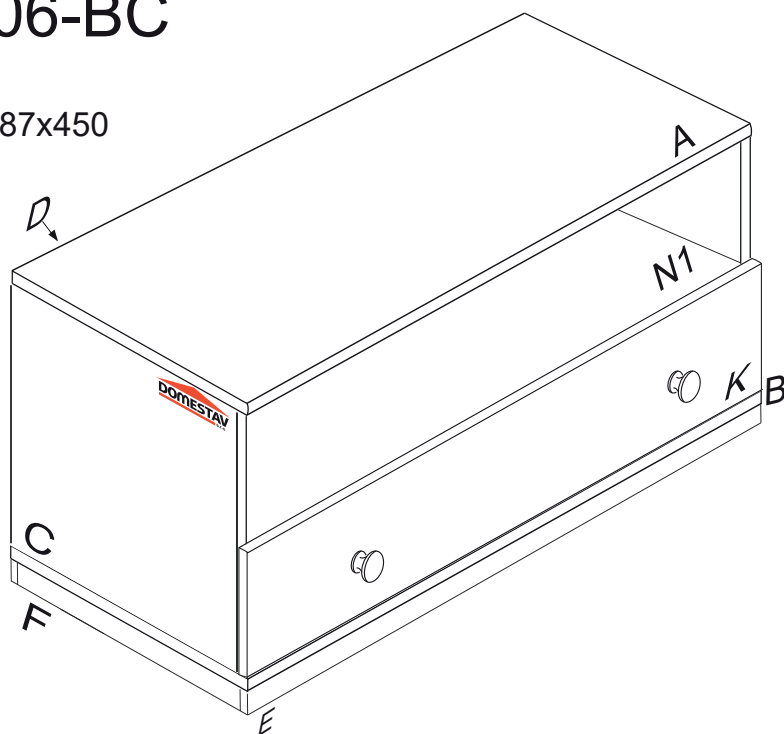


# KLASIK

K 806-BC

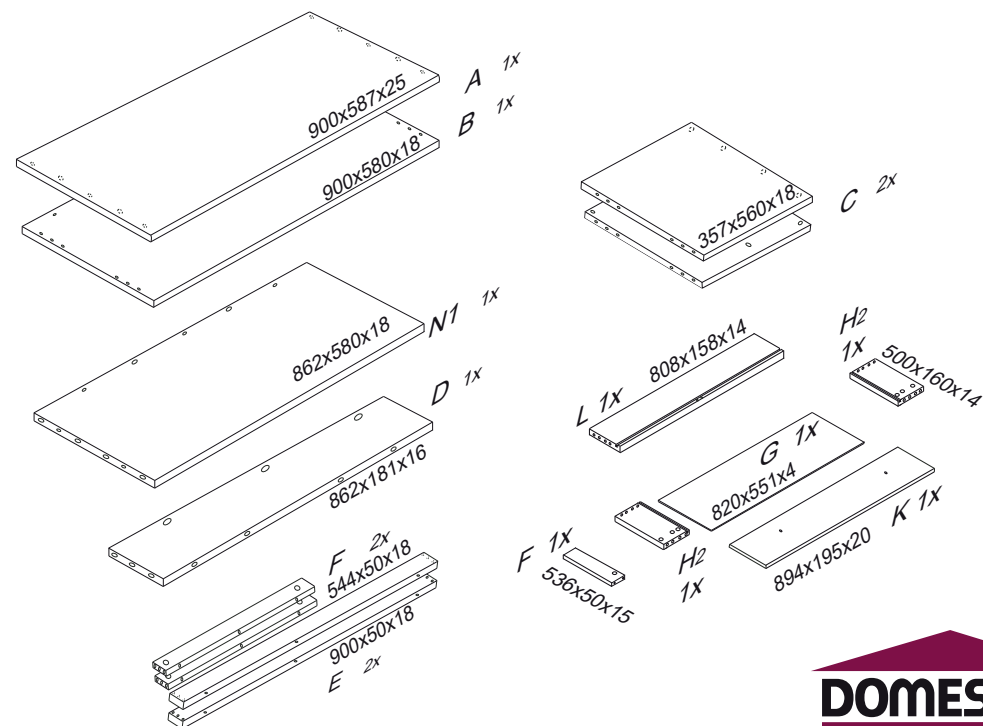
900x587x450

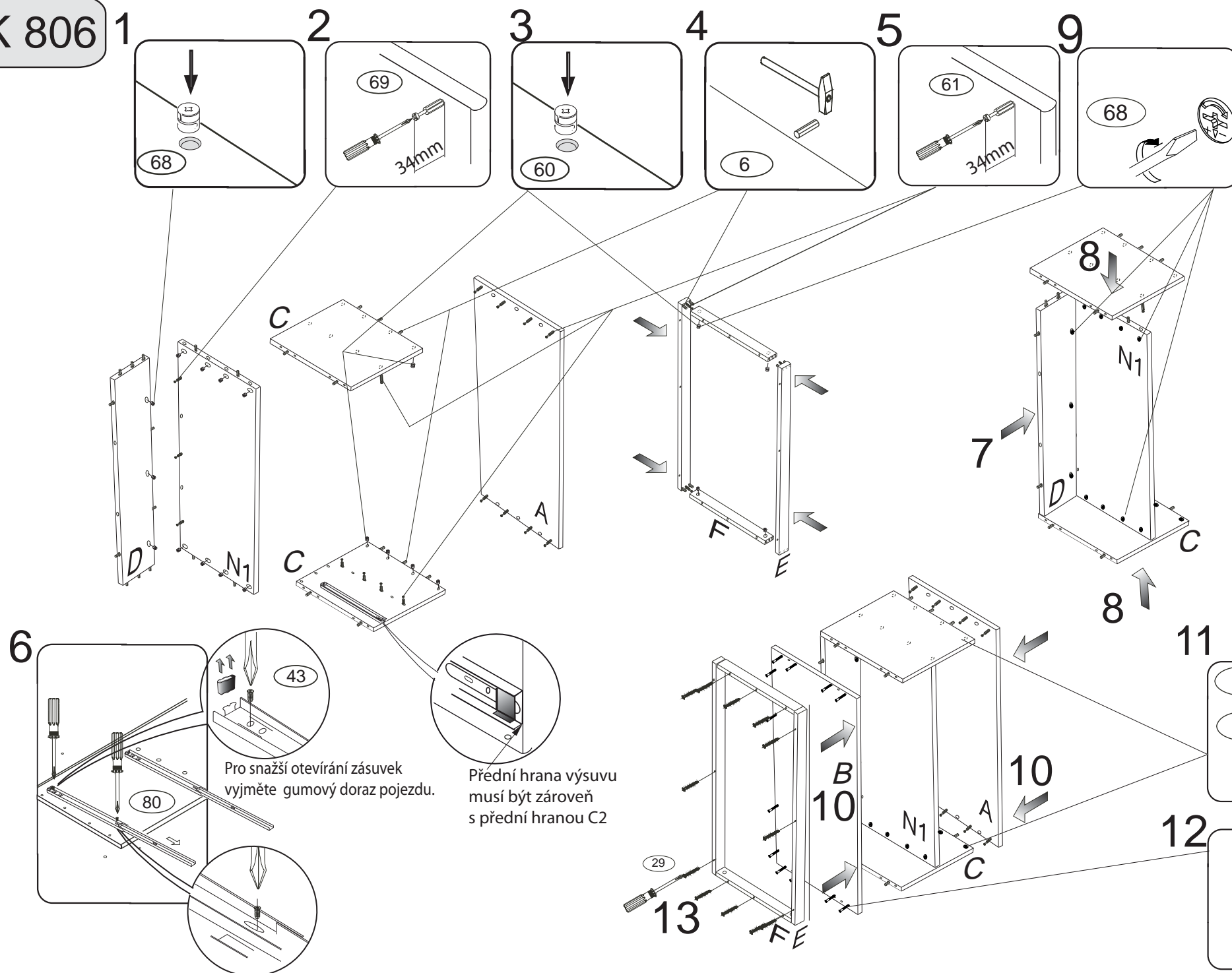


Kolíky vždy narazte nejprve do otvorů ve hranách dílců, je nutné je zarazit se stejným přesahem. V případě, že některý kolík přesahuje, je nutné jej zakrátit. Dílce srážejte kladivem pouze přes dřevěnou podložku.

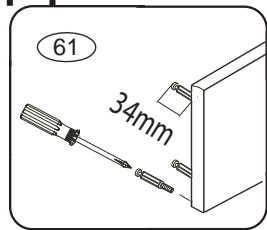
1/3

	3 x1 	4 x1 	6 x40 	23 x6 
28 x2 	29 x12 	43 x6 	60 x24 	61 x24 
67 x8 	68 x6 	69 x6 	70 x5 	71 x11 
80+81 x1 	102 x2 			

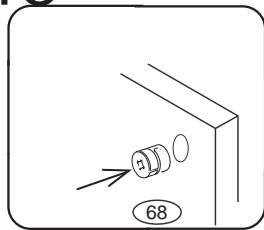




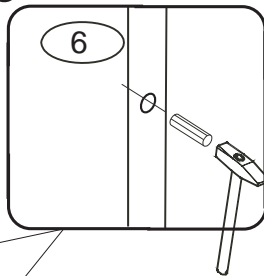
14



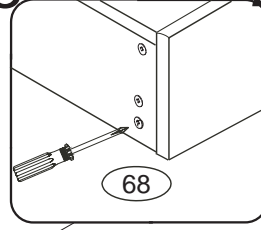
15



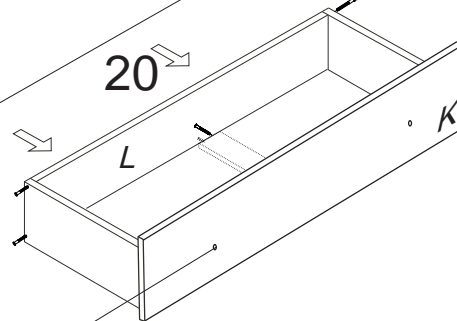
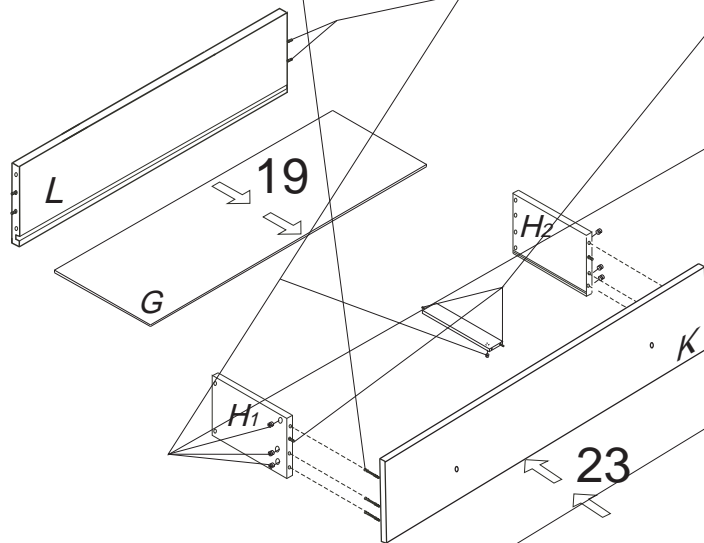
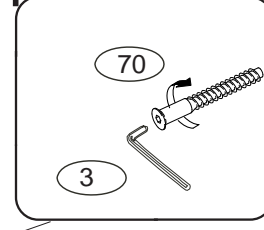
16



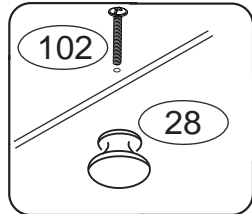
18



24



22



25

