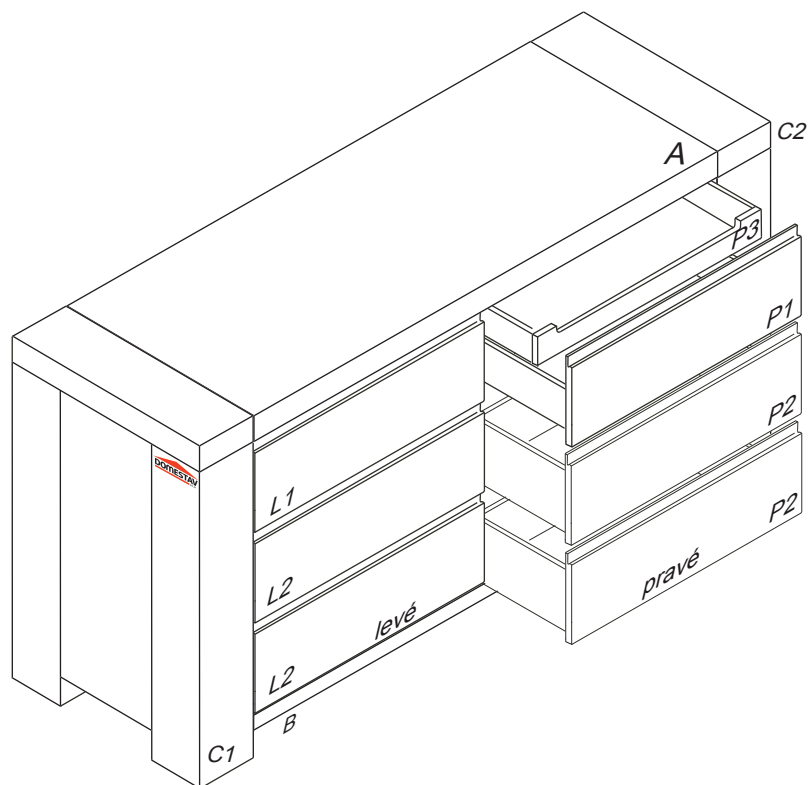


KOMODA ZÁSUVKOVÁ č.M520/D

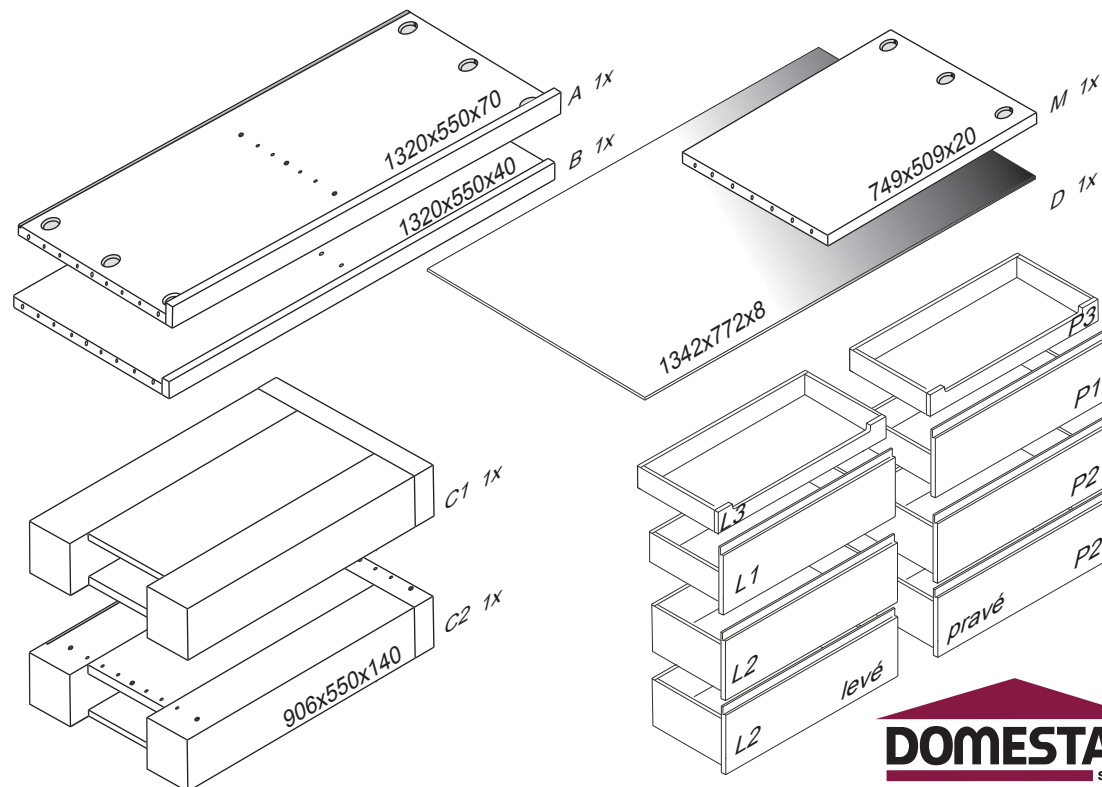
1320x906x550

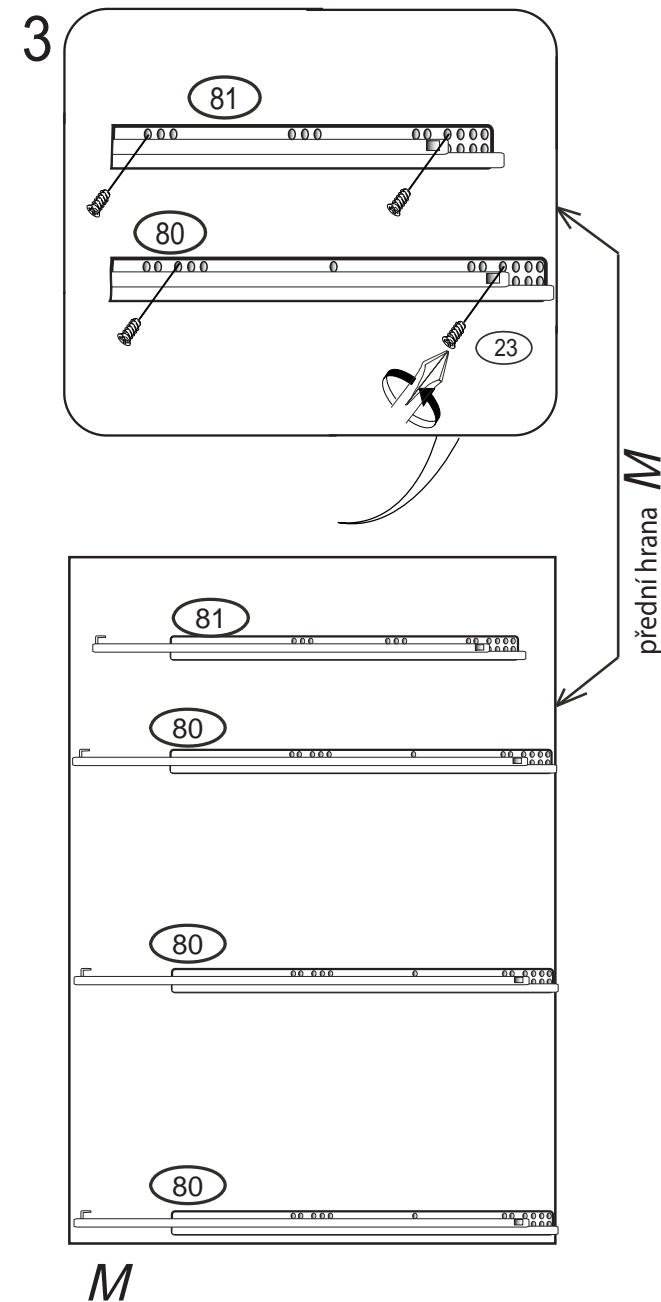
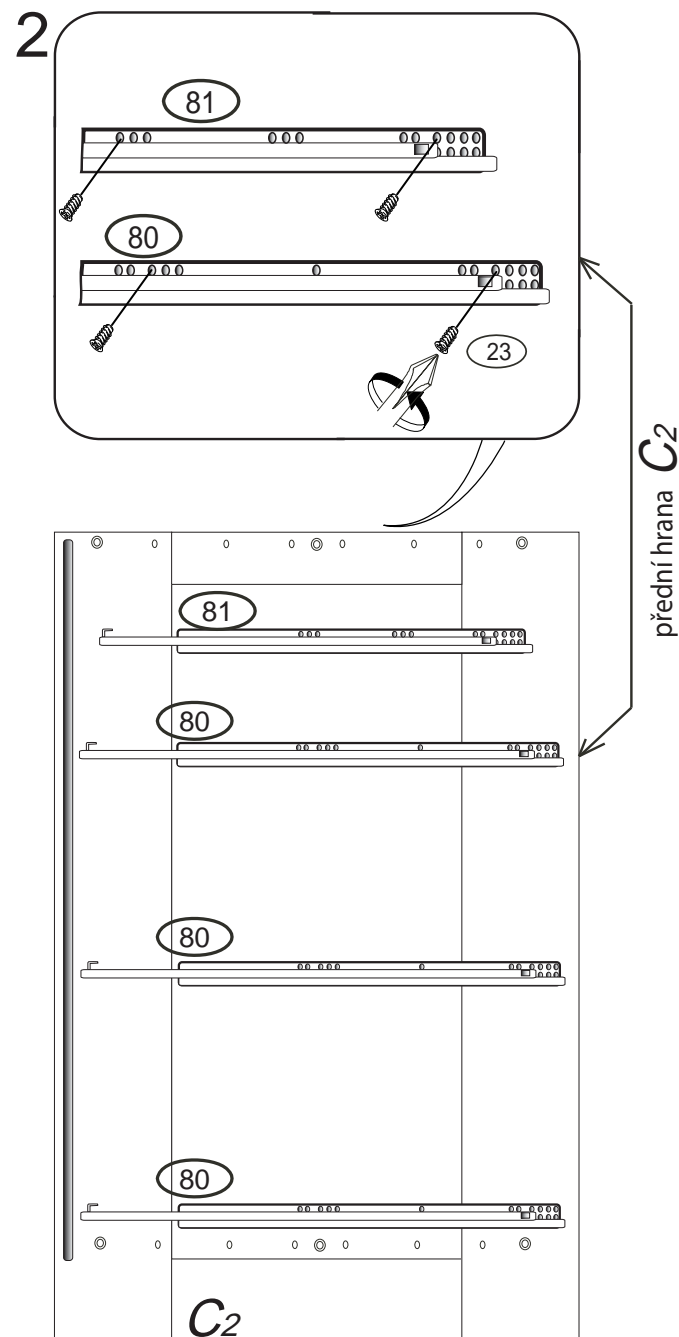
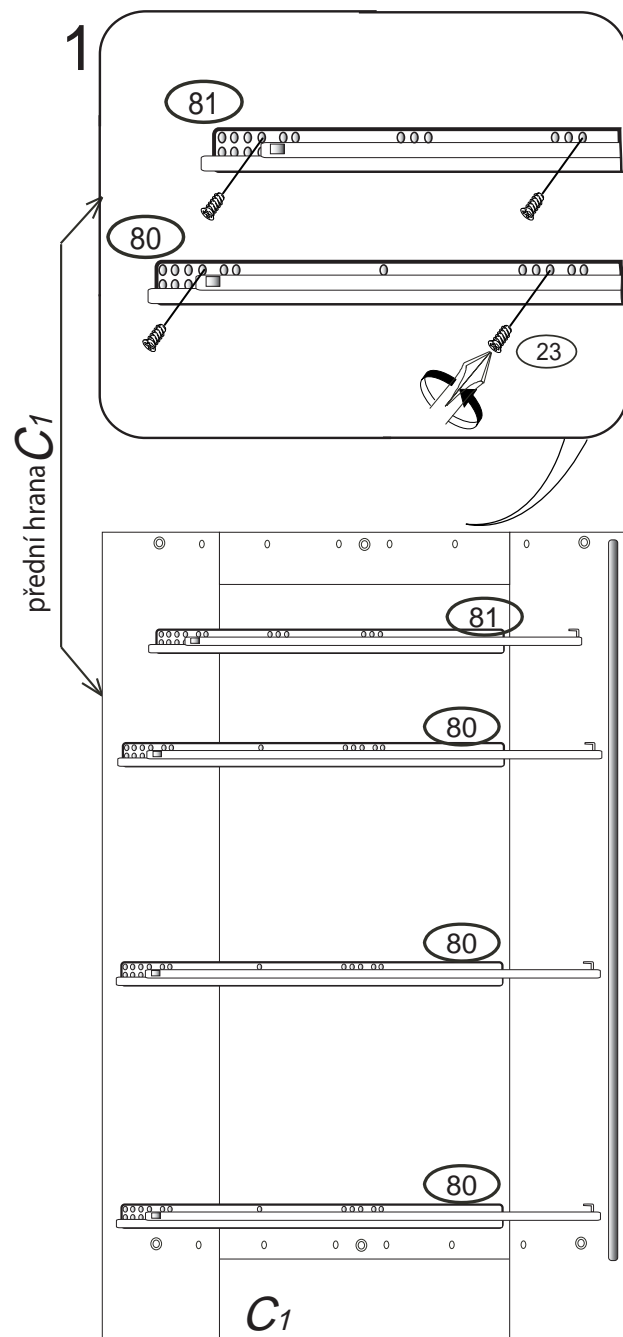


Kolíky vždy narazte nejprve do otvorů ve hranách dílců, je nutné je zarazit se stejným přesahem. V případě, že některý kolík přesahuje, je nutné jej zakrátit. Dílce srážejte kladivem pouze přes dřevěnou podložku.

1/5

	4 x1	5 x1	6 x32	23 x32	120 x4	43 x3	44 x3
	4mm	5mm	8x35mm	EU 6x10mm	filc	12.600	12.600
	80 x6		81 x2	71 x3	45 x12	47 x12	
	500mm		450mm	7x50mm	13.501	13.501	

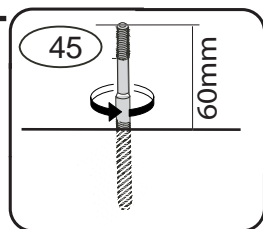




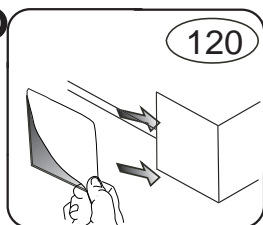
M 520-D

3/5

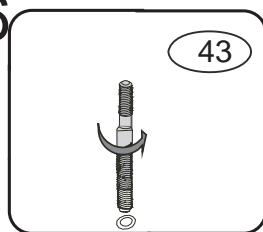
4



5

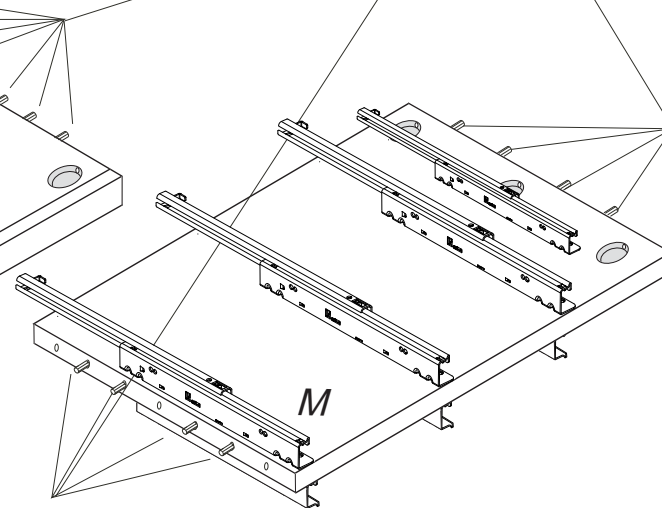
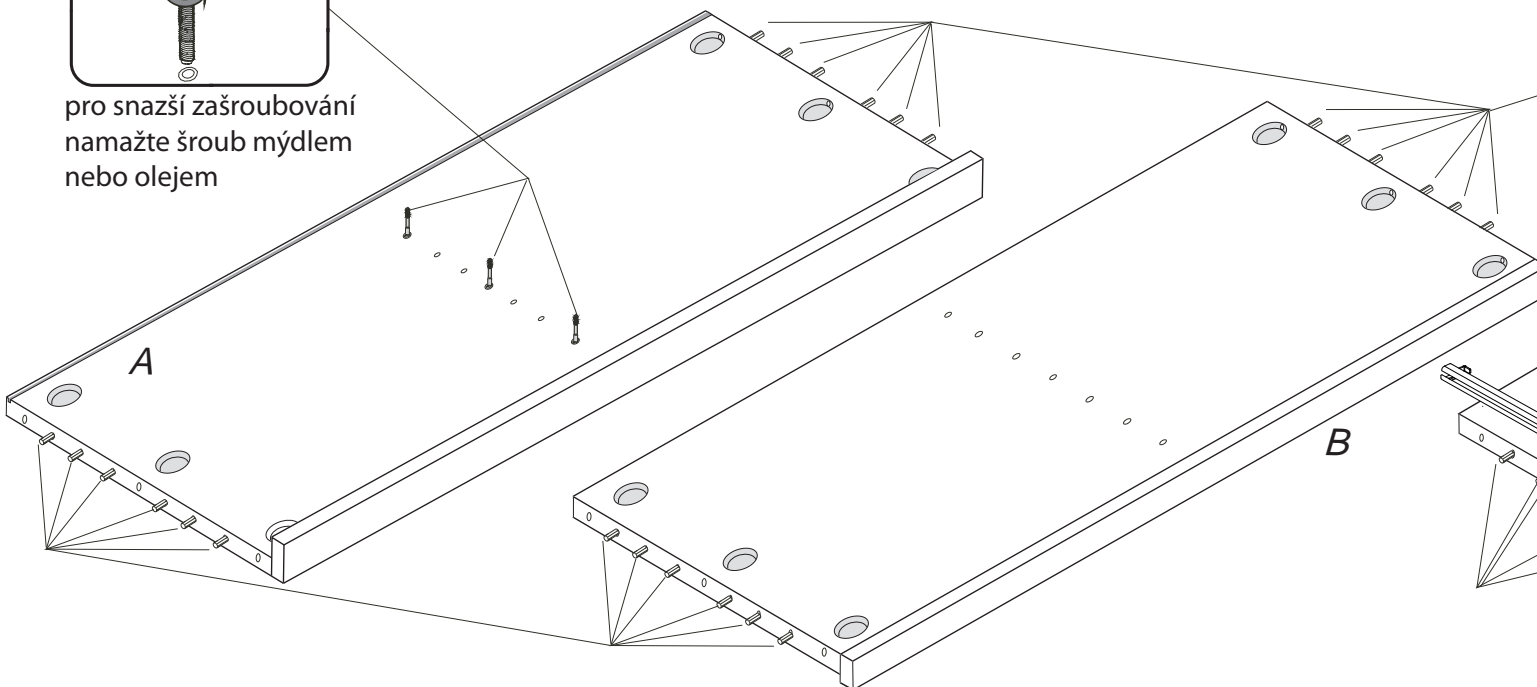
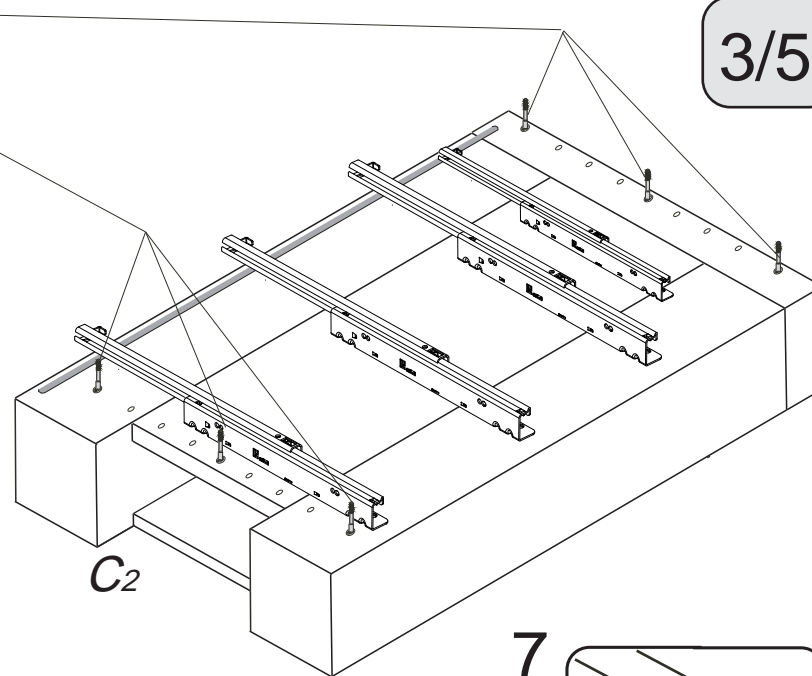
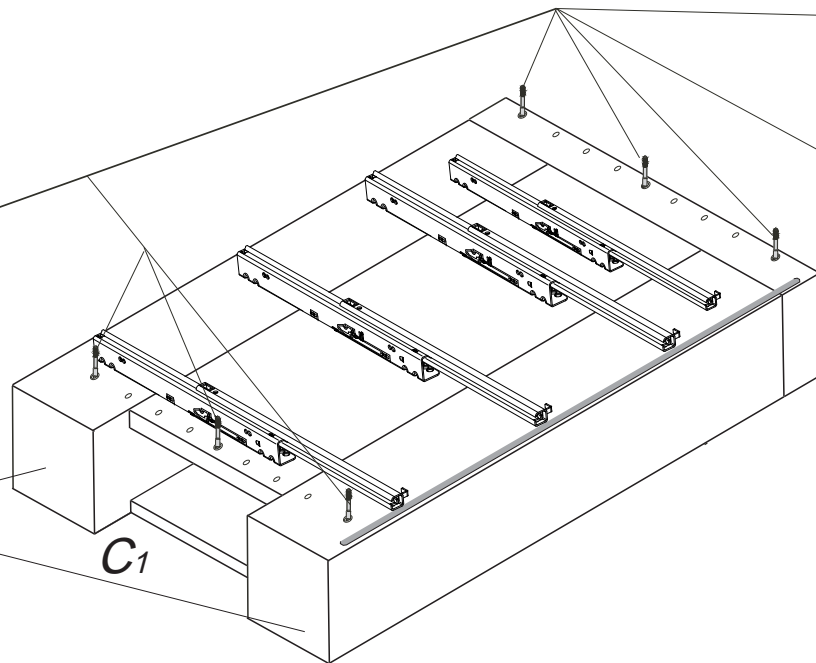
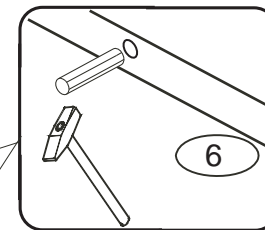


6



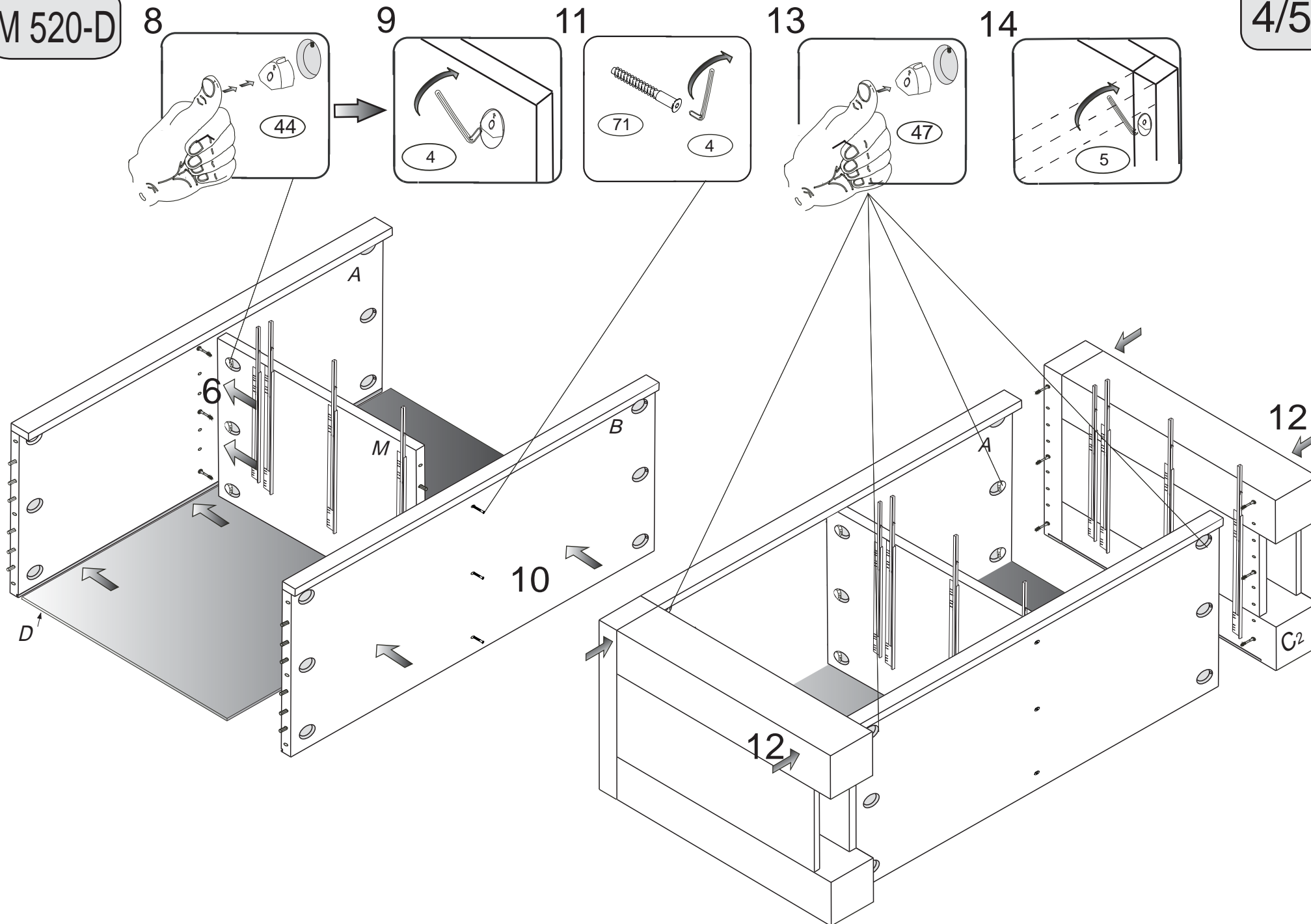
pro snazší zašroubování
namažte šroub mýdlem
nebo olejem

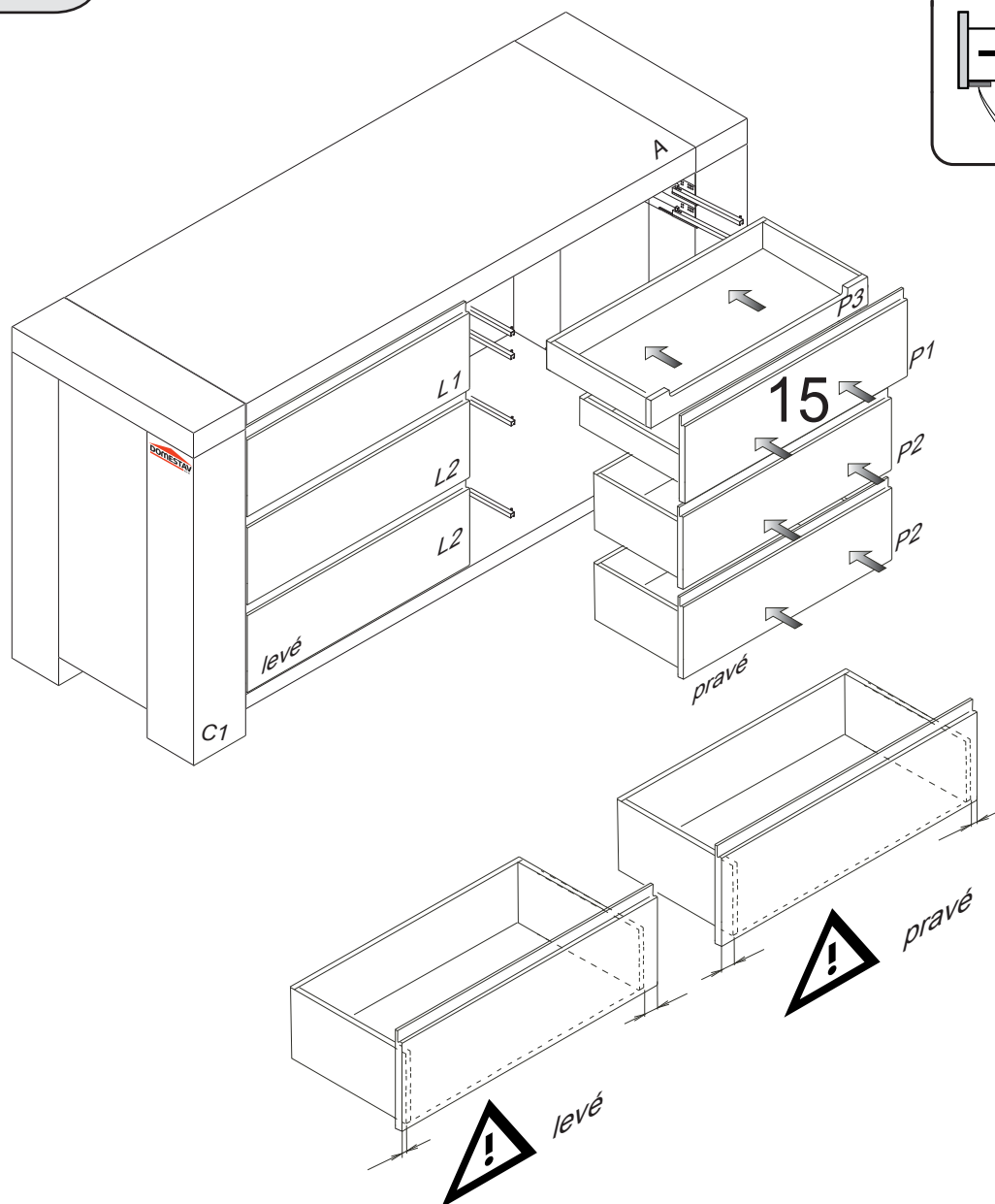
7



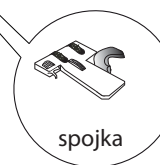
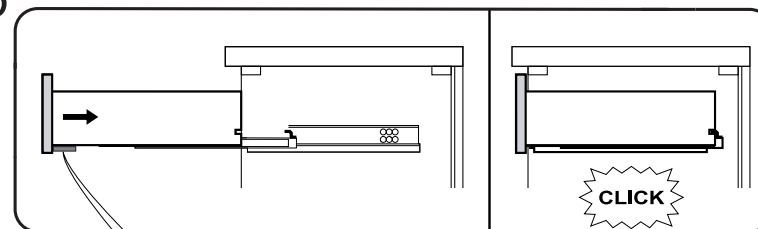
M 520-D

4/5





16



Na vysunuté pojezdy nasadíte zásuvky. Polohu zásuvek upravte červeným kolečkem na spojce.

spojka